



ARKANSAS HUMAN TRAFFICKING COUNCIL

I. LAW ENFORCEMENT REACTIVE PROCEDURE – MINOR (CHILD)

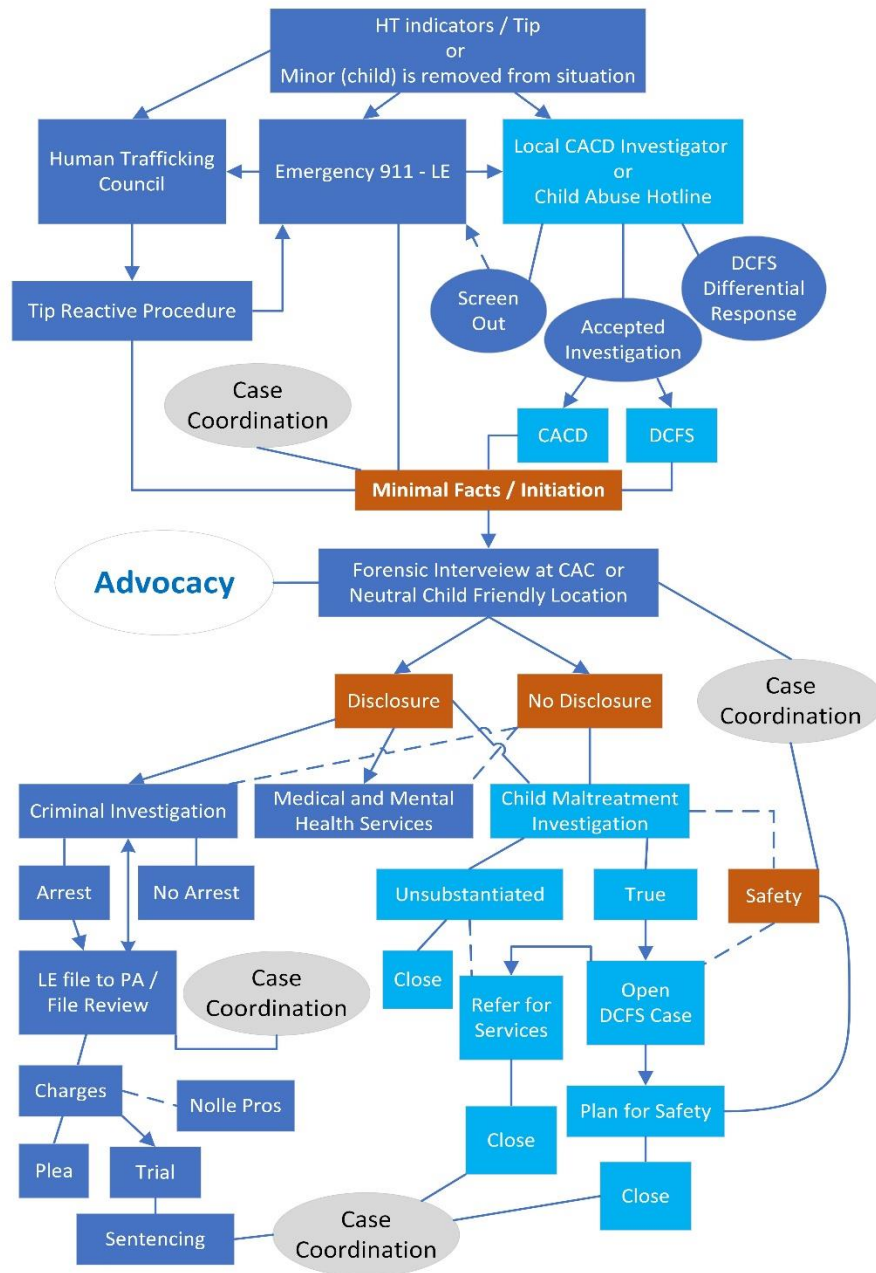
1. Initial HT indicators are detected by a Law Enforcement Officer (LEO) during routine encounter.
2. The LEO should attempt to separate the potential victim from the suspected trafficker (e.g., place parties in separate vehicles).
3. The LEO should use a victim-centered, trauma-informed HT pre-screening tool (HT Indicator card) to further determine whether trafficking may be occurring or has occurred. **Do not directly ask the child or family the questions on the indicator card. It is not a questionnaire.**
4. If a minor (child) discloses that abuse or trafficking has occurred, or LEO believes trafficking happened or is happening, the minor (child) shall be removed from the situation per individual agency policy.
 - (a) The LEO shall immediately notify the areas ASP CACD on call investigator and the ASP Child Abuse/Neglect Hotline at 1-800-482-5964 to assist in the investigation and provide the delivery of victim's services. ASP CACD will complete a simultaneous civil child maltreatment investigation. The criminal and civil investigation should be coordinated with LE and ASP CACD. ADHS will facilitate determining who is the legal guardian of the minor (child), whether placement with the legal guardian is appropriate, and if not, who or what entity shall assume responsibility of the minor (child).
 - (b) After contacting ASP, the LEO shall immediately assess needs of the minor (child) victim, including safe removal from traffickers, food, medical attention, clothing, shelter, and/or other needs. The LEO will coordinate with ASP CACD, ADHS, NGOs, and CACs to address victim's immediate and long-term needs.
 - (c) In determining the identity of the legal guardian, the LEO will work with ADHS and ASP CACD.
 - (d) Law enforcement (LE), ADHS, and ASP CACD should coordinate and complete history searches. This should include child welfare history (e.g., CHRIS search).

- (e) CACD is required to contact the victim after a report is accepted by the Child Abuse Hotline, in accordance with the child maltreatment law. CACD should coordinate with LE to schedule the first contact with the victim. CACD should coordinate with LE regarding witness and offender interviews. LE will serve as lead on criminal investigation, and CACD and the Division of Children and Families (DCFS) will work alongside LE to ensure the child's safety. Either the LEO, the designated company ASP HT Special Agent, or ASP CACD investigator will observe the forensic interview. CACD shall coordinate with LE before making a true finding. Upon request, ASP CACD may request extensions based on law enforcement investigations and the prosecuting attorney's office.
 - (f) LEO documents should detail the encounter, including identification documents, vehicle description, addresses, and contact information for each individual involved. Investigative and operational reports by sworn AHTC LE Task Forces members participating on the LE Task Force will be prepared in writing, promptly, accurately, thoroughly, completely, and legibly, on their respective agency's standard reporting forms. Any departure from this provision due to unusual or exigent circumstances should be documented in the relevant case file.
 - (g) The dedicated company ASP HT Special Agent should coordinate and collaborate with the LEO to determine if the case will be investigated by the local LEA or the AHTC LE Task Forces.
 - (h) The ADHS caseworker is responsible for coordinating appropriate placement and services for the minor (child).
 - (i) When contacted, CACs shall provide or refer child for mental health services, and forensic medical exams, and provide family/victim support and court prep for the victim.
 - (j) CACs will coordinate forensic medical exams and anything of evidence value with LE.
 - (k) The LEO should contact NGOs in their area. NGOs provide a multitude of services for victims of human trafficking. Contact the Arkansas HT Coordinator for assistance in identifying NGOs in the area. NGOs assisting in the investigations are crucial to the successful recovery of victims and prosecutions of traffickers and buyers.
5. If the minor (child) does not disclose that abuse has occurred, but the LEO suspects that the minor (child) is in danger, the LEO should coordinate with ADHS. The ADHS caseworker is responsible for coordinating appropriate immediate and long-term placement and services for the minor (child). The LEO may place a hold on the child. See A.C.A. § 12-18-1001. The LEO should follow agency policy and law pertaining to placing a hold on the child. AHTC encourages LE partnership with ADHS.

6. Any person in charge of a hospital or similar institution or any physician treating a child may keep that child in his or her custody without the consent of the parent or the guardian, whether or not additional medical treatment is required. See A.C.A. § 12-18-1001.
7. If the minor (child) is a foreign national:
 - (a) follow the above protocol;
 - (b) secure a qualified neutral interpreter/translation if needed;
 - (c) run names through NEED NAME (BLOC) or El Paso Intelligence Center (EPIC). If the LEA does not have these capabilities, contact the ASP LE Task Force Special Agent assigned to that respective company;
 - (d) refer victim to Office of Refugee Resettlement; and
 - (e) Law Enforcement request Continued Presence (CP) status or provide CP status or provide documentation to support CP or other immigration assistance.
8. LEO, ASP CACD, ADHS and CACs should participate in MDT Case Reviews related to any encounters involving minor children. LEO and prosecutors may refer encounters to MDT Facilitators to be placed on any agenda for MDT Case Review.

II. MINOR (CHILD) CASE FLOW CHART

AR Human Trafficking Case Flow Chart Minor (child)



- The criminal and civil investigation should be coordinated with LE and ASP CACD.
- CACD should coordinate with LE to schedule the first contact with the victim, witnesses, and offender.
- CACD shall coordinate with LE before making a true finding.
- ADHS will assess safety upon request from CACD. DCFS will determine next steps based on safety assessment.
- CACs shall provide or refer child for mental health services, and forensic medical exams, and provide family/victim support and court prep for the victim.
- CACs will coordinate forensic medical exams and anything of evidence value with LE.