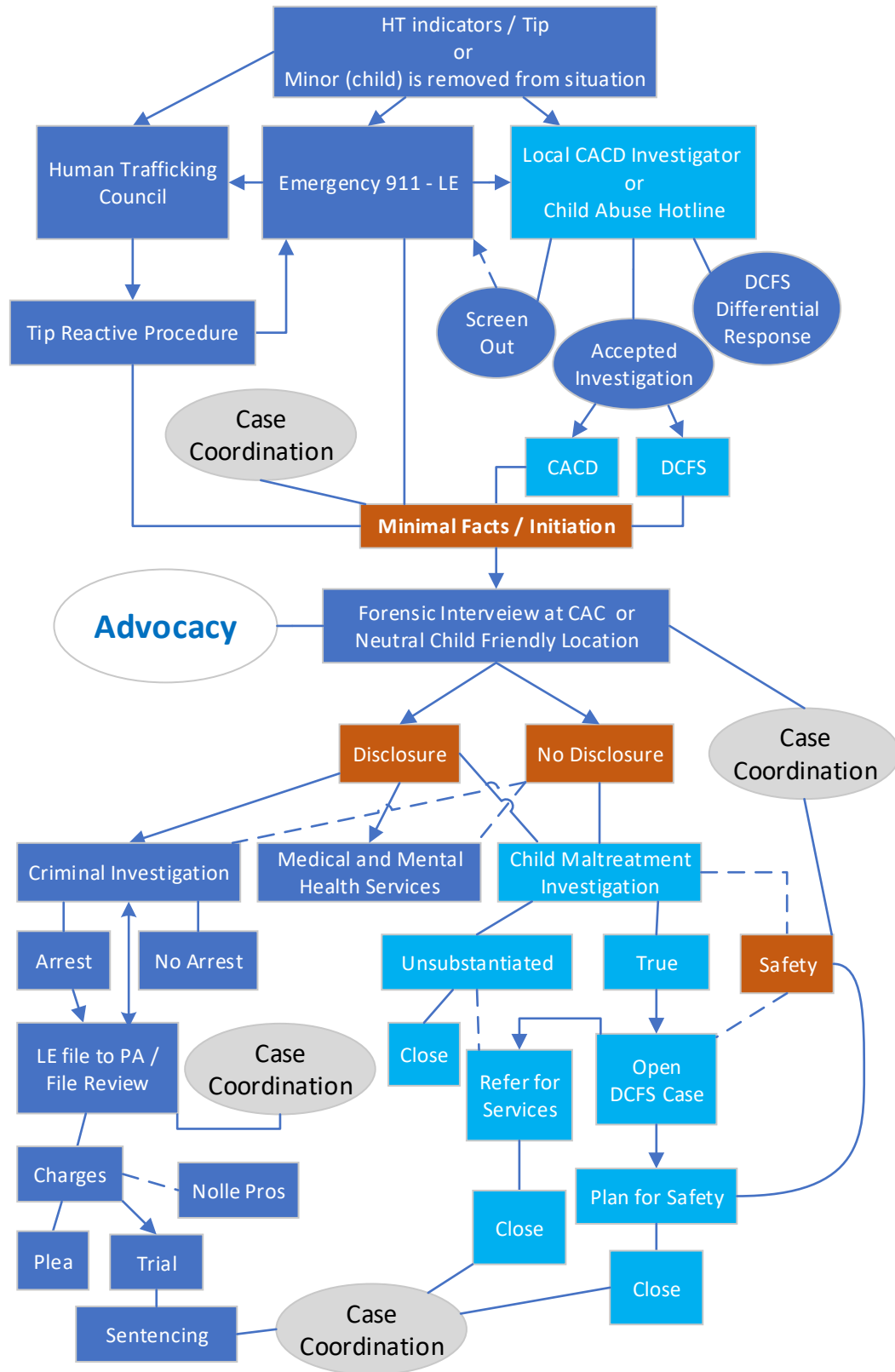


## AR Human Trafficking Case Flow Chart Minor (child)



- The criminal and civil investigation should be coordinated with LE and ASP CACD.
- CACD should coordinate with LE to schedule the first contact with the victim, witnesses, and offender.
- CACD shall coordinate with LE before making a true finding.
- ADHS will assess safety upon request from CACD. DCFS will determine next steps based on safety assessment.
- CACs shall provide or refer child for mental health services, and forensic medical exams, and provide family/victim support and court prep for the victim.
- CACs will coordinate forensic medical exams and anything of evidence value with LE.