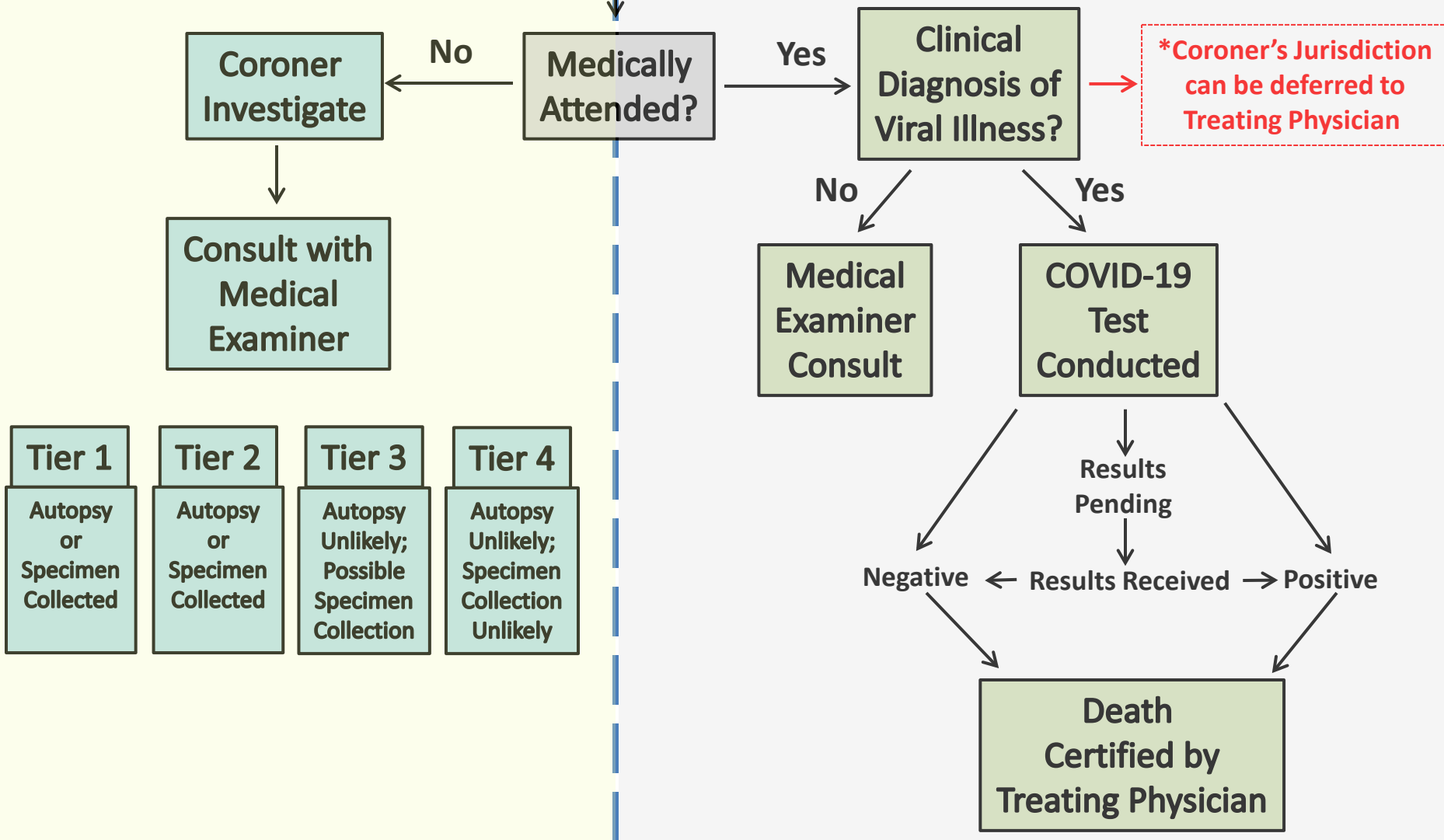


Autopsy May Be Required

Suspected COVID-19 Fatality

No Autopsy Required



- Tier 1**
Autopsy or Specimen Collected
- Tier 2**
Autopsy or Specimen Collected
- Tier 3**
Autopsy Unlikely; Possible Specimen Collection
- Tier 4**
Autopsy Unlikely; Specimen Collection Unlikely